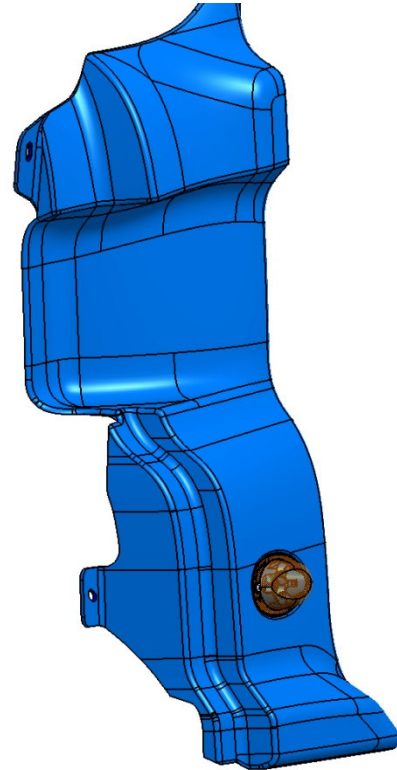


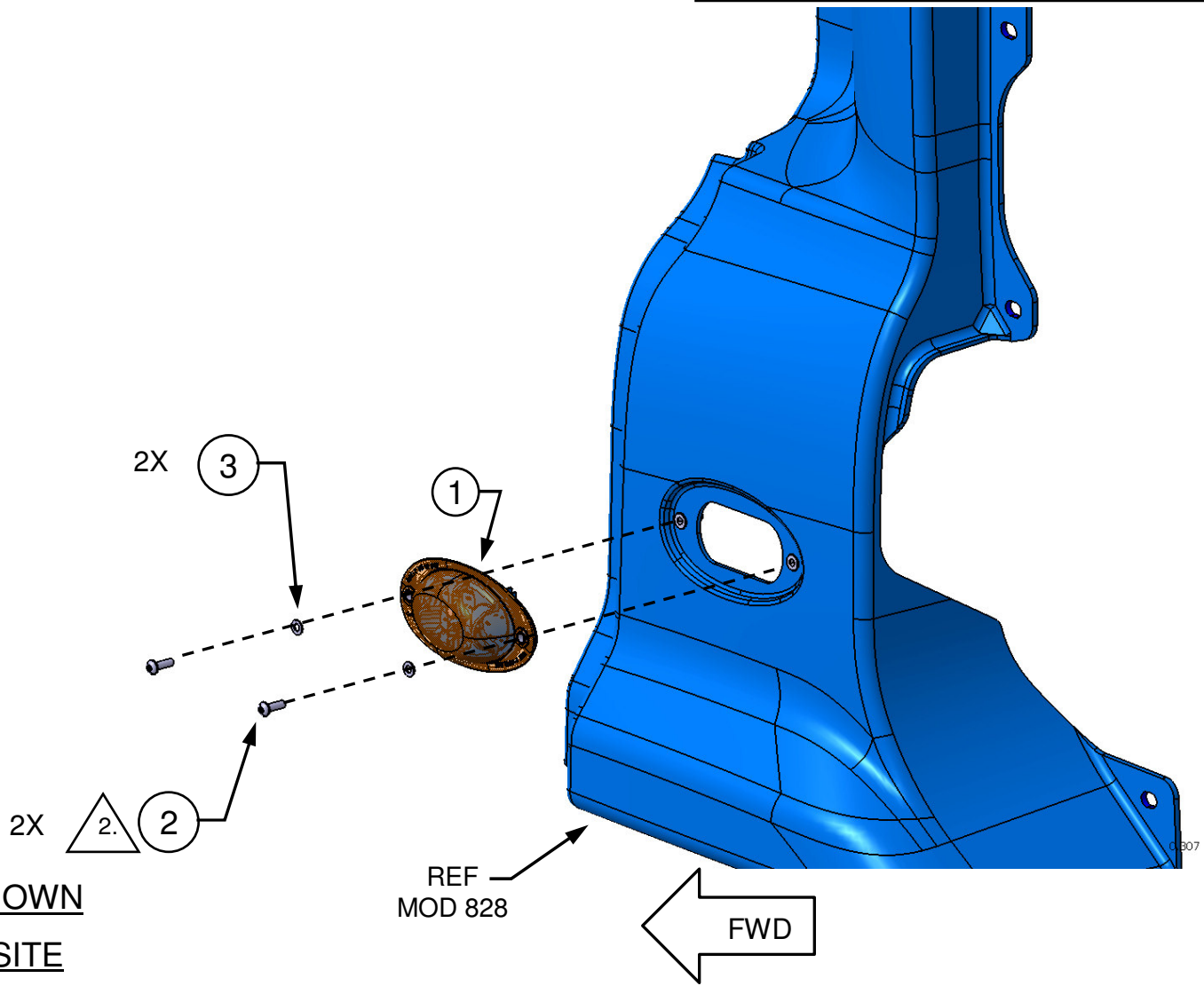
RELEASE NUMBER	REV LTR	REVISION DESCRIPTION	BY	DATE	APPD
P46572-02	-	INITIAL RELEASE	CLC	04/09/13	TAG



1. LH SIDE SHOWN, RH OPPOSITE
2. TORQUE FASTENERS 3.5-4.0 NM (2.5-2.9 FT-LBS, 30-35 IN-LBS)

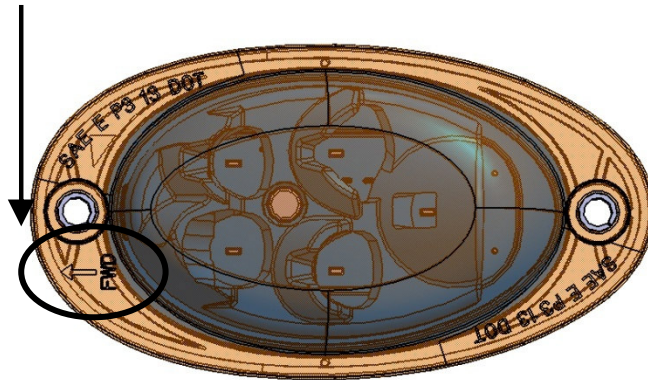
ITEM NUMBER D66-00374-001	DESCRIPTION INSTL- LAMP, TURN, AUX, LED, P3,RH	ITEM NUMBER D66-00374-000	DESCRIPTION INSTL- LAMP, TURN, AUX, LED, P3, LH	DAIMLER		Daimler Trucks North America	
				THE INFORMATION CONTAINED HEREIN IS PROPRIETARY DATA, AND IS NOT FOR DISSEMINATION OR DISCLOSURE, IN WHOLE OR IN PART, FOR ANY PURPOSE OTHER THAN THAT FOR WHICH IT IS SUBMITTED, EXCEPT AS AUTHORIZED IN WRITING BY DAIMLER TRUCKS NORTH AMERICA LLC (DTNA)			
MATERIAL APPROVAL		DATE		UNLESS OTHERWISE NOTED, DIMENSIONS AND TOLERANCES ARE DEFINED ACCORDING TO ASME Y14.5M- 1994, WITH EXCEPTION PER DTNA 09ENG-WI037			
N/A		N/A					
DRAWN BY		DATE		UNLESS OTHERWISE NOTED, DIMENSIONS AND TOLERANCES ARE DEFINED ACCORDING TO ASME Y14.5M- 1994, WITH EXCEPTION PER DTNA 09ENG-WI037			
C. COX		04/04/13					
CHECKED BY		DATE		UNLESS OTHERWISE NOTED, DIMENSIONS AND TOLERANCES ARE DEFINED ACCORDING TO ASME Y14.5M- 1994, WITH EXCEPTION PER DTNA 09ENG-WI037			
T. GRIFFIN		04/09/13					
RESPONSIBLE ENGINEER		DATE		UNLESS OTHERWISE NOTED, DIMENSIONS AND TOLERANCES ARE DEFINED ACCORDING TO ASME Y14.5M- 1994, WITH EXCEPTION PER DTNA 09ENG-WI037			
T. GRIFFIN		04/09/13					
APPROVED BY		DATE		UNLESS OTHERWISE NOTED, DIMENSIONS AND TOLERANCES ARE DEFINED ACCORDING TO ASME Y14.5M- 1994, WITH EXCEPTION PER DTNA 09ENG-WI037			
DJJ		04/09/13					
DESCRIPTION INSTL- LAMP, TURN, AUX, LED, P3							
SUPPLEMENTAL DESCRIPTION 300							
ITEM/DRAWING NUMBER D66-00374				REVISION LETTER -		PAGE 1 of 3	

RELEASE NUMBER	REV LTR	REVISION DESCRIPTION	BY	DATE	APPD
P46572-02	-	INITIAL RELEASE	CLC	04/09/13	TAG

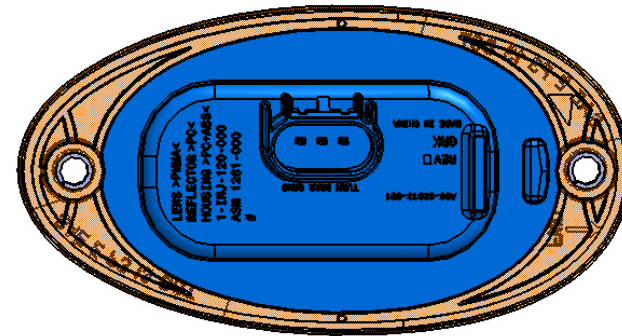


RELEASE NUMBER	REV LTR	REVISION DESCRIPTION	BY	DATE	APPD
P46572-02	-	INITIAL RELEASE	CLC	04/09/13	TAG

INSTALL WITH
FWD AND
ARROW
POINTING
FORWARD



FRONT VIEW



REAR VIEW