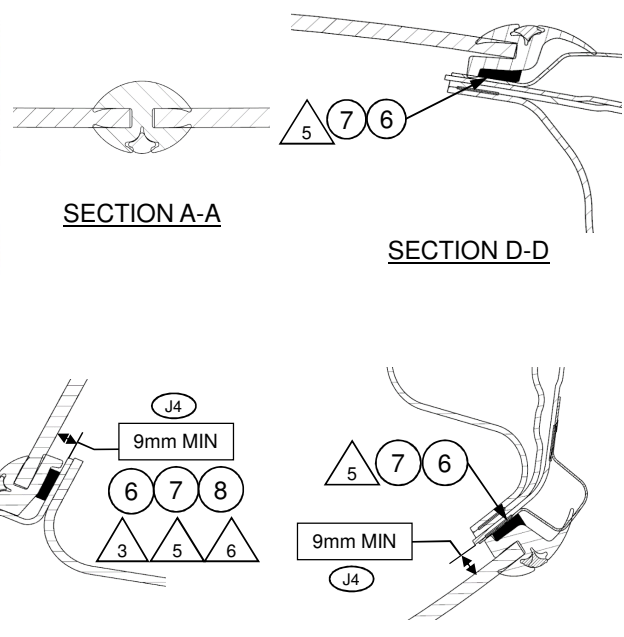
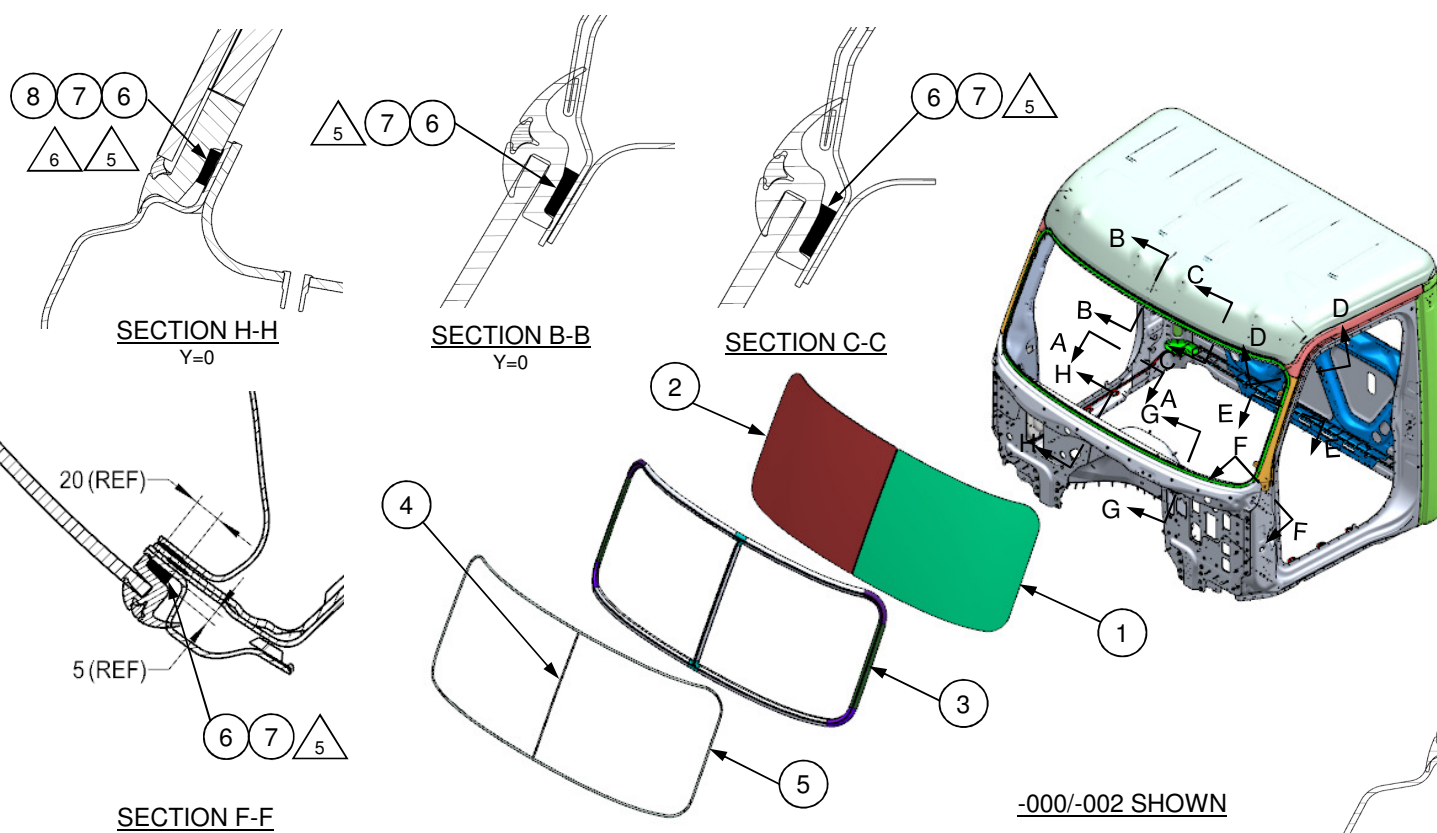


RELEASE NUMBER	REV LTR	REVISION DESCRIPTION	BY	DATE	APPD
P12CAB-Y8	J	1:INSTALL DRAWING CONVERTED TO POWERPOINT 2:ADDED NOTE 8 3:UPDATED NOTES 5 AND 6 4:ADDED GLASS TO SHEET METAL DIMENSION TO VIEW E-E AND G-G	A4J	02/21/18	SIJW



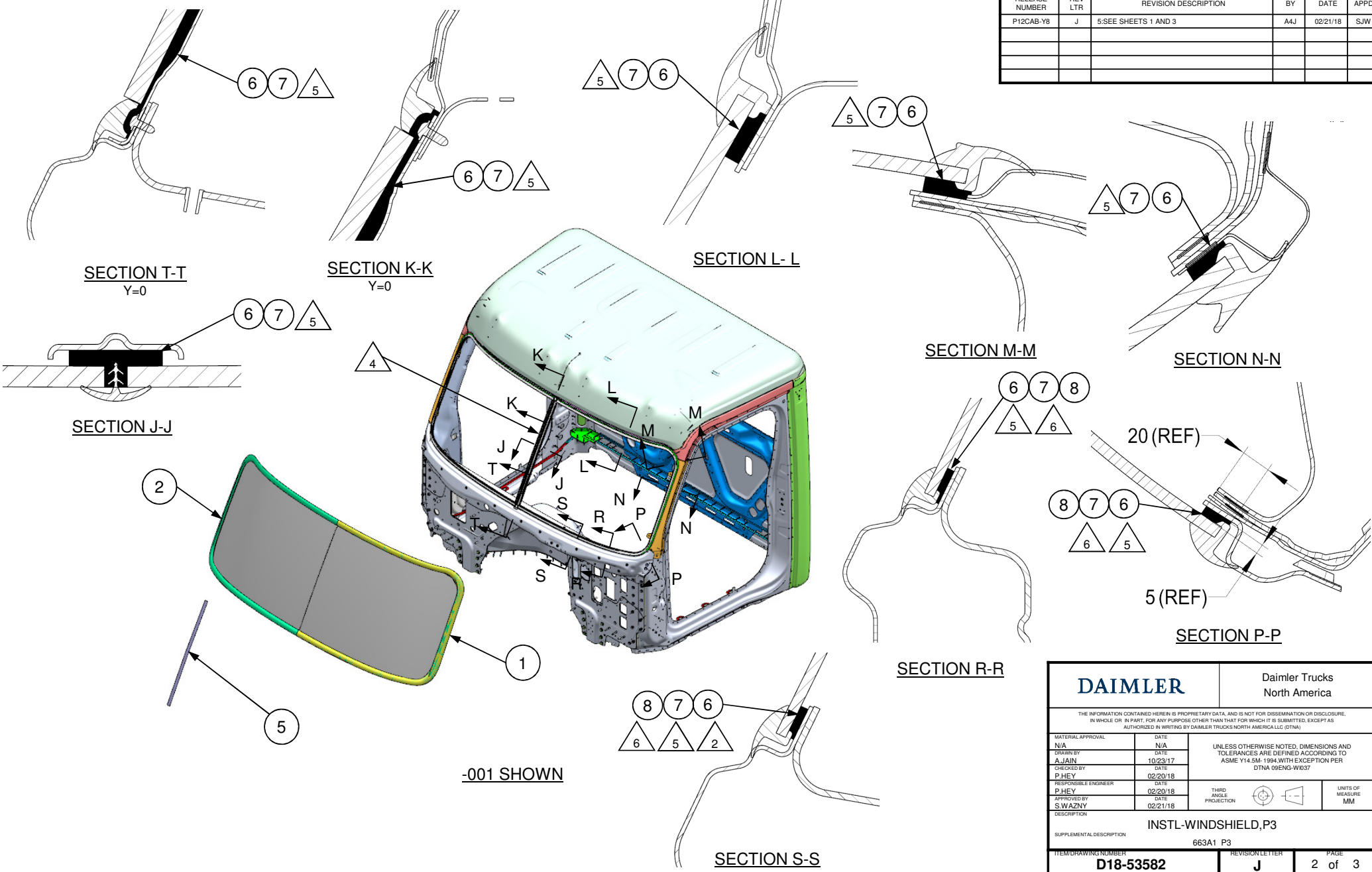
1. APPLY ITEM 6 ADHESIVE AROUND THE ENTIRE PERIPHERY OF WINDSHIELD AS SHOWN IN SECTIONS.
2. ADHESIVE BAND WIDTH FOR -001 ENCAPSULATED GLASS IS LIMITED BY THE SHEET METAL EDGE AT ONE END AND THE ENCAPSULATION AT THE OTHER DO NOT ALLOW "SQUEEZE OUT" AT FLANGE EDGE.
3. ADHESIVE BAND WIDTH FOR -000 ROPED/BONDED GLASS IS LIMITED BY THE SHEET METAL FLANGE FILLET AT ONE END AND THE SEAL WALL AT THE OTHER. DO NOT ALLOW "SQUEEZE OUT" AT SEAL WALL.
4. REFERENCE D18-57984-000 FOR INSTALLATION OF DIVISION BAR.
5. APPLY ACTIVATOR (ITEM 7) TO ALL SHEET METAL AND SEAL BOND SURFACES BEFORE ANY ADHESIVE APPLICATION. ACTIVATOR TO BE APPLIED WITH A MOIST LINT FREE TOWEL AND IMMEDIATELY WIPED DRY WITH A LINT FREE TOWEL TO LEAVE A THIN FILM ON THE BONDING SURFACES. ACTIVATOR SHALL BE APPLIED BETWEEN 5 AND 120 MINUTES PRIOR TO ADHESIVE APPLICATION. WAIT TIMES OUT OF THIS RANGE ARE NOT ACCEPTABLE AND WILL RESULT IN ADHESIVE FAILURE.
6. APPLY PRIMER (ITEM 8) TO FRONTWALL NOSEBEAM (REF MODULE 824), -000/-001 ONLY.
7. ALIGNMENT MARKS LOCATED IN THE CORNERS OF ITEMS 1 AND 2 SHOULD NOT BE VISIBLE AFTER INSTALLATION. IF MARKS ARE VISIBLE, THEN GLASS MUST BE READJUSTED SO THAT THE LIP OF THE SEAL COVERS THE MARK.
8. LOCATION AND WIDTH OF AREA WHERE TOP COAT PAINT IS OMITTED. DIMENSION IS FROM EDGE OF THE SHEETMETAL.

SECTION G-G  
TYPICAL NOSEBEAM

SECTION E-E  
TYPICAL A-PILLAR

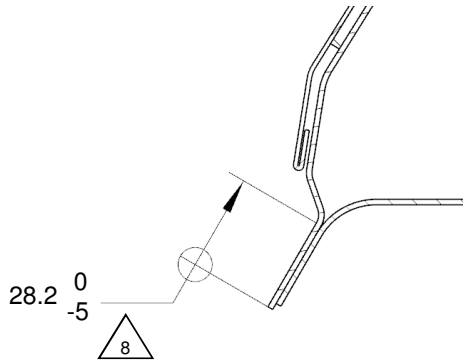
ITEM NUMBER D18-53582-002		DESCRIPTION INSTL-WINDSHIELD ROPED, BONDED		ITEM NUMBER D18-53582-001		DESCRIPTION INSTL-WINDSHIELD ENCAPSULATED		ITEM NUMBER D18-53582-000		DESCRIPTION INSTL-WINDSHIELD ROPED, BONDED	
<b>DAIMLER</b>				Daimler Trucks North America				<small>THE INFORMATION CONTAINED HEREIN IS PROPRIETARY DATA, AND IS NOT FOR DISSEMINATION OR DISCLOSURE, IN WHOLE OR IN PART, FOR ANY PURPOSE OTHER THAN THAT FOR WHICH IT IS SUBMITTED, EXCEPT AS AUTHORIZED IN WRITING BY DAIMLER TRUCKS NORTH AMERICA LLC (DTNA).</small>			
MATERIAL APPROVAL N/A		DATE N/A		UNLESS OTHERWISE NOTED, DIMENSIONS AND TOLERANCES ARE DEFINED ACCORDING TO ASME Y14.5M-1994 WITH EXCEPTION PER DTNA 09ENG-W037		THIRD ANGLE PROJECTION		UNITS OF MEASURE MM			
DRAWN BY A.JAIN		DATE 10/23/17		RESPONSIBLE ENGINEER P.HEY		DATE 02/20/18		APPROVED BY S.WAZNY		DATE 02/21/18	
SUPPLEMENTAL DESCRIPTION INSTL-WINDSHIELD, P3				ITEM/DRAWING NUMBER D18-53582		REVISION LETTER J		PAGE 1 of 3			

RELEASE NUMBER	REV LTR	REVISION DESCRIPTION	BY	DATE	APPD
P12CAB-Y8	J	5-SEE SHEETS 1 AND 3	A4J	02/21/18	SJW

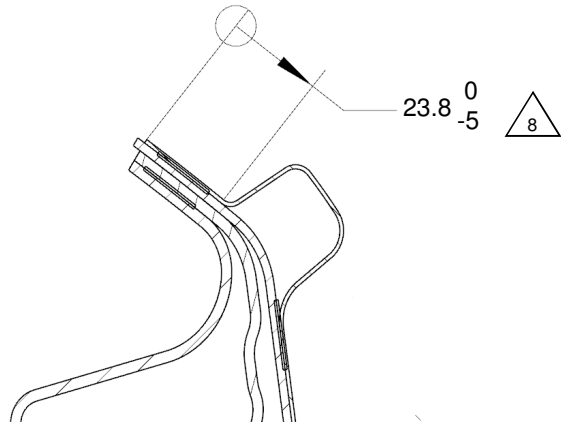


<b>DAIMLER</b>		Daimler Trucks North America	
<small>THE INFORMATION CONTAINED HEREIN IS PROPRIETARY DATA, AND IS NOT FOR DISSEMINATION OR DISCLOSURE, IN WHOLE OR IN PART, FOR ANY PURPOSE OTHER THAN THAT FOR WHICH IT IS SUBMITTED, EXCEPT AS AUTHORIZED IN WRITING BY DAIMLER TRUCKS NORTH AMERICA LLC (DTNA)</small>			
MATERIAL APPROVAL	DATE	UNLESS OTHERWISE NOTED, DIMENSIONS AND TOLERANCES ARE DEFINED ACCORDING TO ASME Y14.5M-1994 WITH EXCEPTION PER DTNA 09ENG-W037	
N/A	N/A		
DRAWN BY	DATE		
A.JAIN	10/23/17		
CHECKED BY	DATE		
P.HEY	02/20/18		
RESPONSIBLE ENGINEER	DATE		
P.HEY	02/20/18		
APPROVED BY	DATE	THIRD ANGLE PROJECTION	UNITS OF MEASURE
S.WAZNY	02/21/18		MM
DESCRIPTION			
INSTL-WINDSHIELD,P3			
SUPPLEMENTAL DESCRIPTION			
663A1 P3			
ITEM/DRAWING NUMBER	REVISION LETTER	PAGE	
<b>D18-53582</b>	<b>J</b>	<b>2 of 3</b>	

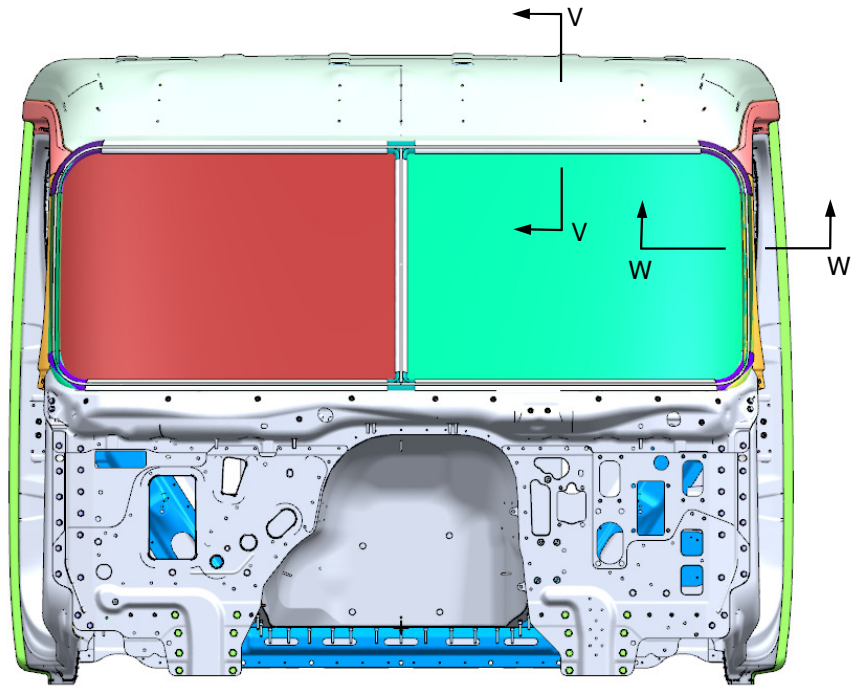
RELEASE NUMBER	REV LTR	REVISION DESCRIPTION	BY	DATE	APPD
P12CAB-Y8	J	6:ADDED SHEET 3 7:ADDED SECTIONS V AND W	A4J	02/21/18	SJW



**SECTION V-V**  
BOND FLANGE TO BE FREE OF TOP COAT  
(GLASS, SEAL, ADHESIVE OMITTED FOR CLARITY)



**SECTION W-W**  
BOND FLANGE TO BE FREE OF TOP COAT  
(GLASS, SEAL, ADHESIVE OMITTED FOR CLARITY)



**DAYCAB FRONT VIEW**  
(SLEEPER SIMILAR)

<b>DAIMLER</b>		Daimler Trucks North America	
<small>THE INFORMATION CONTAINED HEREIN IS PROPRIETARY DATA, AND IS NOT FOR DISSEMINATION OR DISCLOSURE, IN WHOLE OR IN PART, FOR ANY PURPOSE OTHER THAN THAT FOR WHICH IT IS SUBMITTED, EXCEPT AS AUTHORIZED IN WRITING BY DAIMLER TRUCKS NORTH AMERICA LLC (DTNA)</small>			
MATERIAL APPROVAL	DATE	<small>UNLESS OTHERWISE NOTED, DIMENSIONS AND TOLERANCES ARE DEFINED ACCORDING TO ASME Y14.5M-1994 WITH EXCEPTION PER DTNA 09ENG-W037</small>	
N/A	N/A		
DRAWN BY	DATE	<small>THIRD ANGLE PROJECTION</small>	<small>UNITS OF MEASURE</small> MM
A.JAIN	10/23/17		
CHECKED BY	DATE		
P.HEY	02/20/18		
RESPONSIBLE ENGINEER	DATE		
P.HEY	02/20/18		
APPROVED BY	DATE		
S.WAZNY	02/21/18		
<small>SUPPLEMENTAL DESCRIPTION</small> <b>INSTL-WINDSHIELD,P3</b>			
<small>ITEM/DRAWING NUMBER</small> <b>D18-53582</b>		<small>REVISION LETTER</small> <b>J</b>	<small>PAGE</small> <b>3 of 3</b>