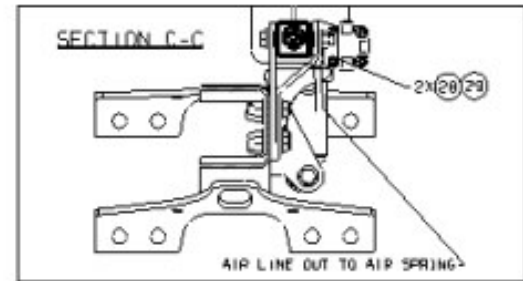
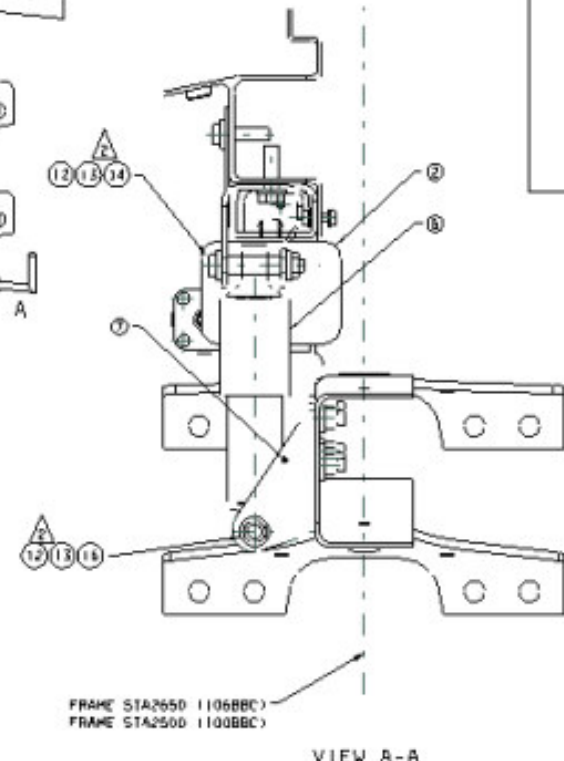
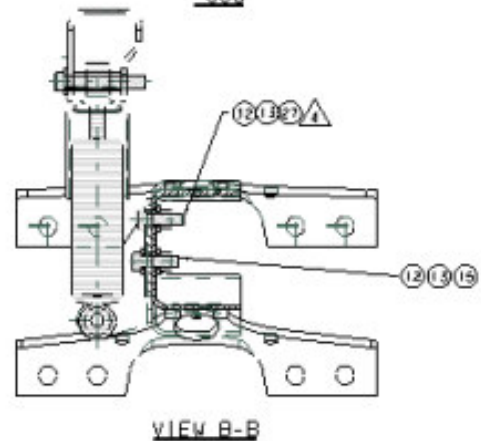
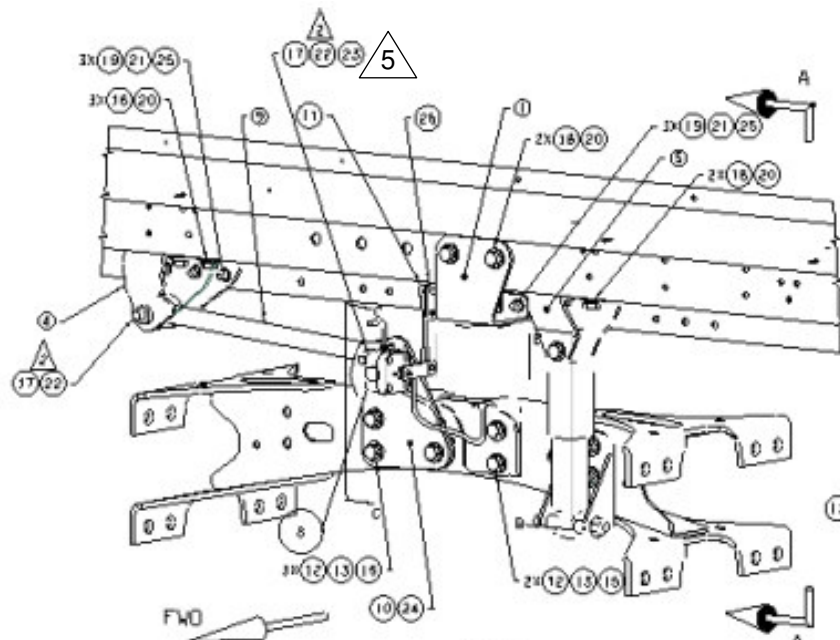


RELEASE NUMBER	REV LTR	REVISION DESCRIPTION	BY	DATE	APPD
P23553-97	E	1-VIEW ADDED TO SHOW 28,29	MKB	11/17/03	TJO
		2-WAS 45 FT LBS MAX			
		3-ADDED AIR LINE ROUTING			
		4-NOTE 3 REMOVED			
P24444-H7	F	UPDTD TO SHOW CORCT ITM 7 INST	MKB	04/19/04	TJO
P42973-S3	G	ADDED NOTE 5 & CREATED PPT	KLB	12-05-11	M1M

1. UNLESS OTHERWISE SPECIFIED TORQUE FASTENERS TO STANDARD SHOP PRACTICE.
- E2 2. TORQUE FASTENERS TO 40-45 FT-LB.
3. .
- E4 4. FLANGE HEAD BOLT MUST BE IN TOP HOLE IN ORIENTATION SHOWN. NO WASHER UNDER BOLT HEAD.
5. WHILE TIGHTENING NUT, HOLD SCREW WITH 3/16" ALLEN WRENCH TO PREVENT SCREW FROM TURNING. TORQUE NUTS TO 6 ± 1 Nm (46 ± 9 LB-INCH).

ITEM NUMBER D18-45788-001	DESCRIPTION INSTL-RR CAB SUSP AIR,280,M2	ITEM NUMBER D18-45788-000	DESCRIPTION INSTL-RR CAB SUSP AIR,106,M2	<h1 style="margin: 0;">DAIMLER</h1>	Daimler Trucks North America
THE INFORMATION CONTAINED HEREIN IS PROPRIETARY DATA, AND IS NOT FOR DISSEMINATION OR DISCLOSURE, IN WHOLE OR IN PART, FOR ANY PURPOSE OTHER THAN THAT FOR WHICH IT IS SUBMITTED, EXCEPT AS AUTHORIZED IN WRITING BY DAIMLER TRUCKS NORTH AMERICA LLC (DTNA)					
MATERIAL APPROVAL N/A		DATE N/A		UNLESS OTHERWISE NOTED, DIMENSIONS AND TOLERANCES ARE DEFINED ACCORDING TO ASME Y14.5M-1994, WITH EXCEPTION PER DTNA 09ENG-WI037	
DRAWN BY Z.MUSIAL		DATE 06/28/01			
CHECKED BY D.HUDDLESON		DATE 07/09/01			
RESPONSIBLE ENGINEER J.ATCHLEY		DATE 06/28/01			
APPROVED BY D.GADOWSKI		DATE 06/28/01		THIRD ANGLE PROJECTION	UNITS OF MEASURE MM
DESCRIPTION INSTL-RR CAB SUSP AIR,M2					
SUPPLEMENTAL DESCRIPTION 650D1					
ITEM/DRAWING NUMBER D18-45788				REVISION LETTER G	PAGE 1 of 3



FRAME STA2650 (1106BBC)
 FRAME STA2500 (1100BBC)

