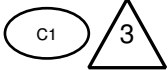


RELEASE NUMBER	REV LTR	REVISION DESCRIPTION	BY	DATE	APPD
P4CABB-Q5	B	REVISED & REDRAWN, ADDED INSTLALL BY	RAR	12/16/11	MID
		HAND TO NOTE 2			
P44951-01	C	1.ADDED NOTE 3 ,	RAR	07/23/12	MID
		2.INSERTED SHEET 3			

1. BEFORE INSTALLING GRILLE, ITEM 1, CLEAN BONDING SURFACE ON HOOD WITH 50:50 ISOPROPYL ALCOHOL/WATER MIX AND ALLOW TO DRY COMPLETELY. REMOVE BACKING FROM ADHESIVE STRIP ON UNDERSIDE OF TOP EDGE OF GRILLE AND AFTER INSTALLING GRILLE, APPLY FIRM PRESSURE TO TOP OF GRILLE TO ENSURE GOOD ADHESION (WET OUT) OF ADHESIVE TO HOOD SURFACE.

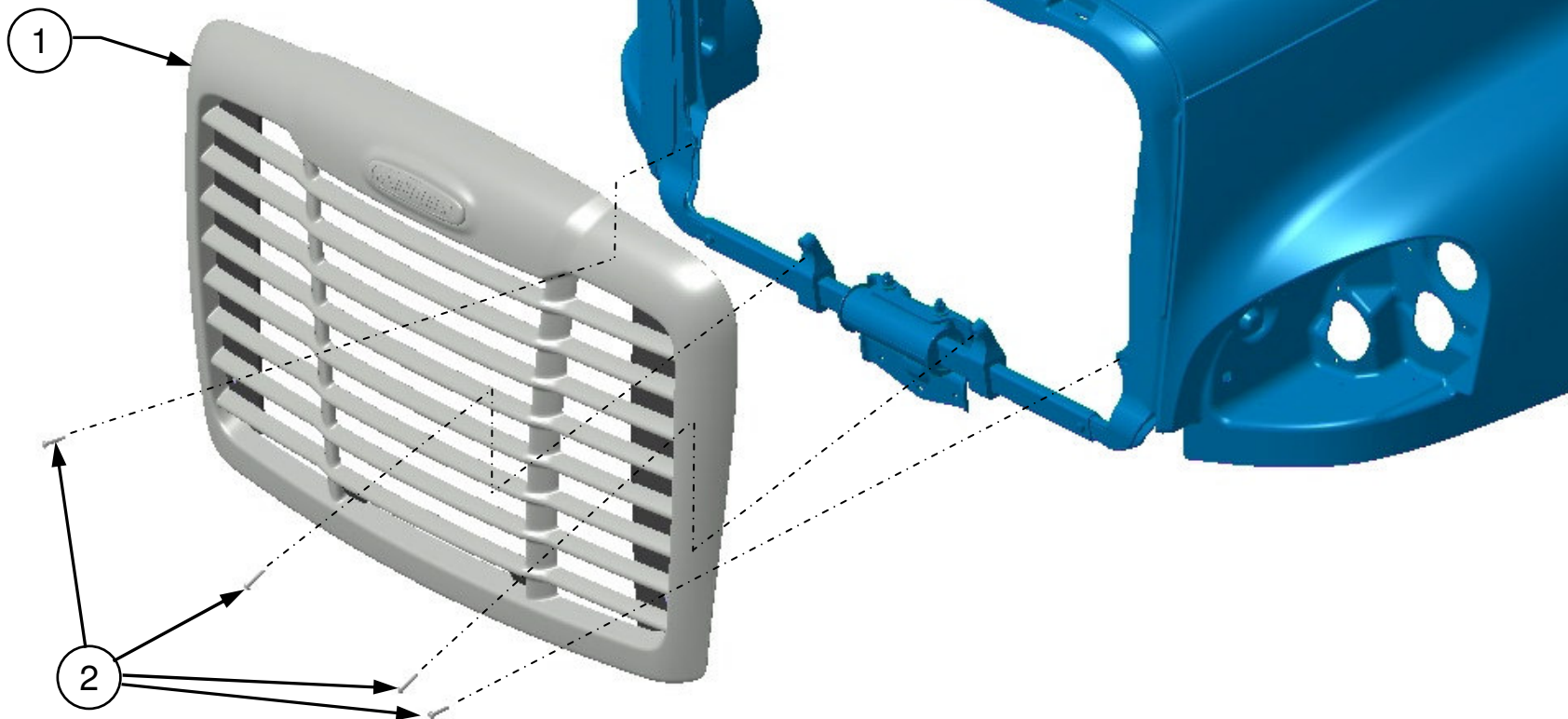
2. INSTALL FASTENERS, ITEM 2, INTO ISOLATORS IN HOOD BY HAND. TORQUE TO 6 ± 1 FT-LBS

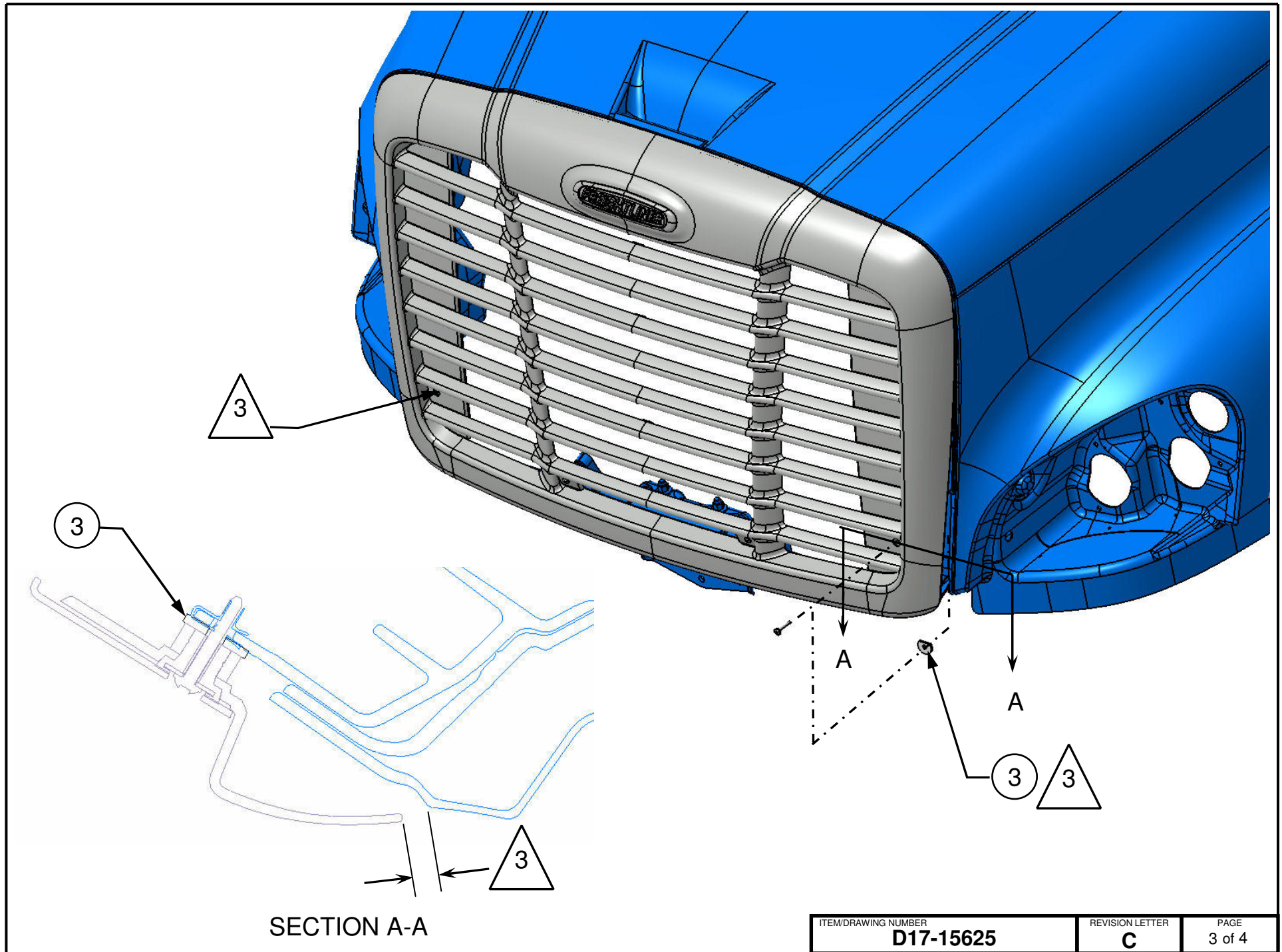


MEASURE GAP BTWN HOOD AND GRILLE AS SHOWN IN SECTION A-A, BOTH SIDES. IF GAP ON EITHER SIDE IS LESS THAN 8mm, (REF DIAGRAM D18-60546-000)INSERT WASHER, ITEM 3 ON THAT SIDE BETWEEN HOOD AND GRILLE, OUTBOARD LOCATIONS ONLY.

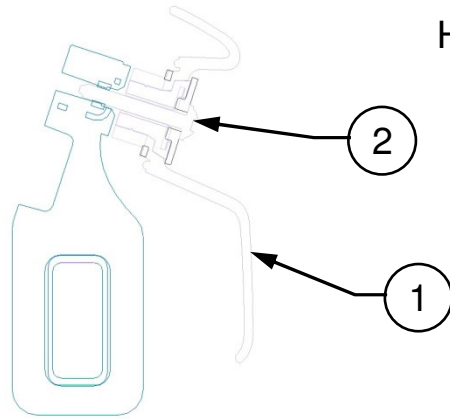
ITEM NUMBER D17-15625-000	DESCRIPTION INSTL-GRILLE	DAIMLER		Daimler Trucks North America	
		THE INFORMATION CONTAINED HEREIN IS PROPRIETARY DATA, AND IS NOT FOR DISSEMINATION OR DISCLOSURE, IN WHOLE OR IN PART, FOR ANY PURPOSE OTHER THAN THAT FOR WHICH IT IS SUBMITTED, EXCEPT AS AUTHORIZED IN WRITING BY DAIMLER TRUCKS NORTH AMERICA LLC (DTNA)			
		MATERIAL APPROVAL N/A	DATE N/A	UNLESS OTHERWISE NOTED, DIMENSIONS AND TOLERANCES ARE DEFINED ACCORDING TO ASME Y14.5M-1994, WITH EXCEPTION PER DTNA 09ENG-WI037	
		DRAWN BY S.GRIFFITHS	DATE 07/31/06		
		CHECKED BY M.GUILFOYLE	DATE 07/31/06	THIRD ANGLE PROJECTION	
RESPONSIBLE ENGINEER M.DAWSON	DATE 07/31/06				
APPROVED BY M.GUILFOYLE	DATE 07/31/06				
DESCRIPTION		INSTL-GRILLE			
SUPPLEMENTAL DESCRIPTION		646A1			
ITEM/DRAWING NUMBER		D17-15625		REVISION LETTER	C
				PAGE	1 of 4

REF – HOOD ASSY
MOD 644

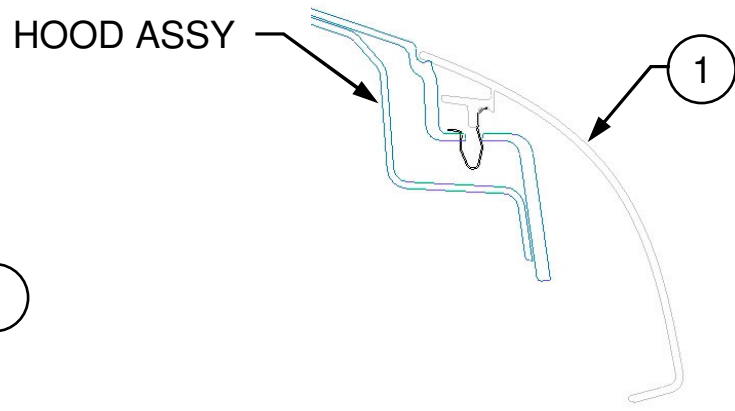




ITEM/DRAWING NUMBER D17-15625	REVISION LETTER C	PAGE 3 of 4
-----------------------------------------	-----------------------------	----------------



SECTION B - B



SECTION C - C

