

RELEASE NUMBER	REV LTR	REVISION DESCRIPTION	BY	DATE	APPD
P39890-01	-	INITIAL RELEASE	DP1	06/21/10	RPM
PCHA31-B5	A	1. ADDED NOTE: TORQUE FITTINGS PER DTNA SPEC 49-00305-000. SEE PG 1	5MM	1/17/24	EMD



Pre-fill item 2 (02-12175-012) extension hose with grease before installation.



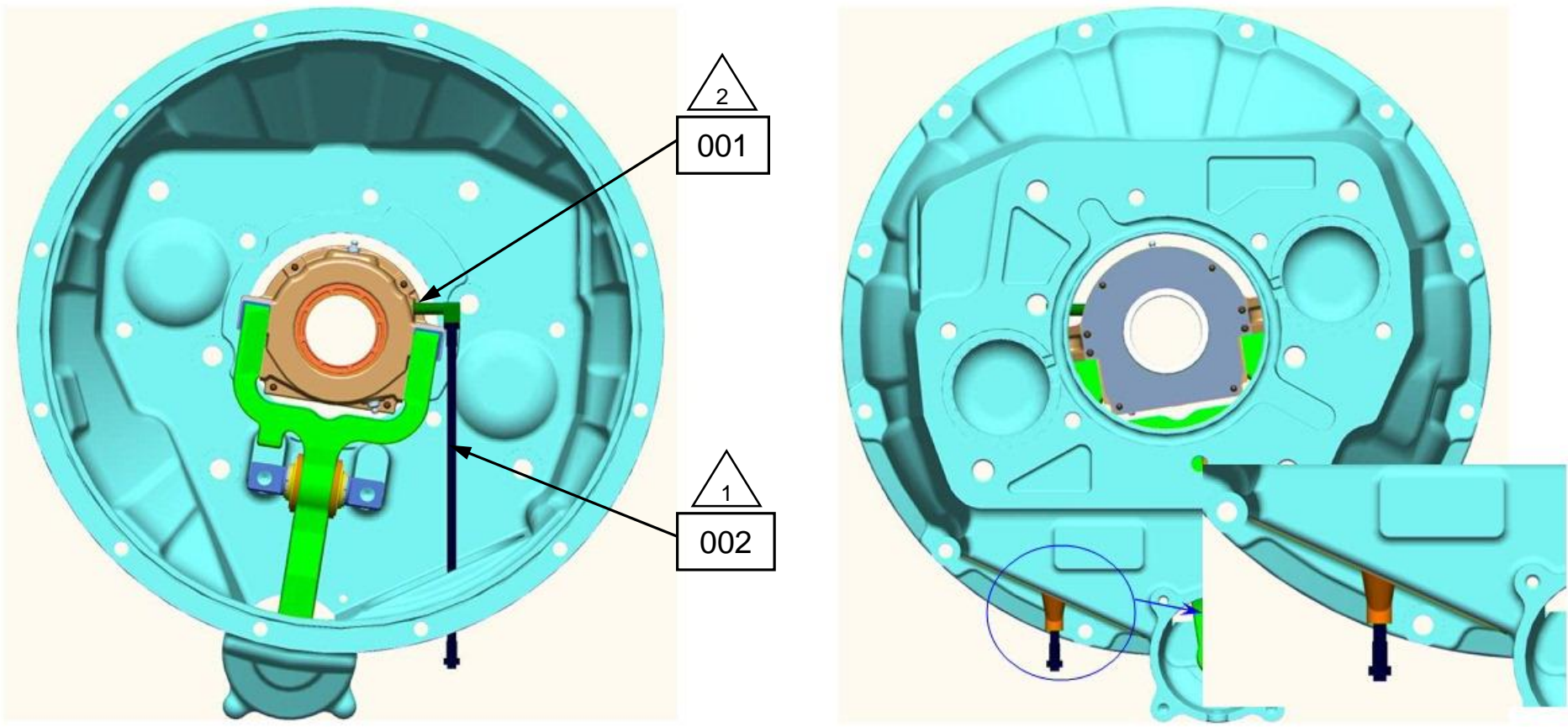
Remove side zerk, install item 1 (90 degree elbow) into bearing pointing down and approximately 5 degrees aft and then assemble pre-filled grease tube into elbow. Torque fittings per DTNA spec 49-00305-000.

A1

- A-8173 slotted hand-hole cover is pre-installed by the supplier of the transmission. If cover is removed, ensure the hand-hole cover is re-installed with the grommet biased aft towards the transmission. See Page 3.
- As the transmission is assembled to the engine, guide the extension hose into the grommet cavity, then proceed with final assembly.

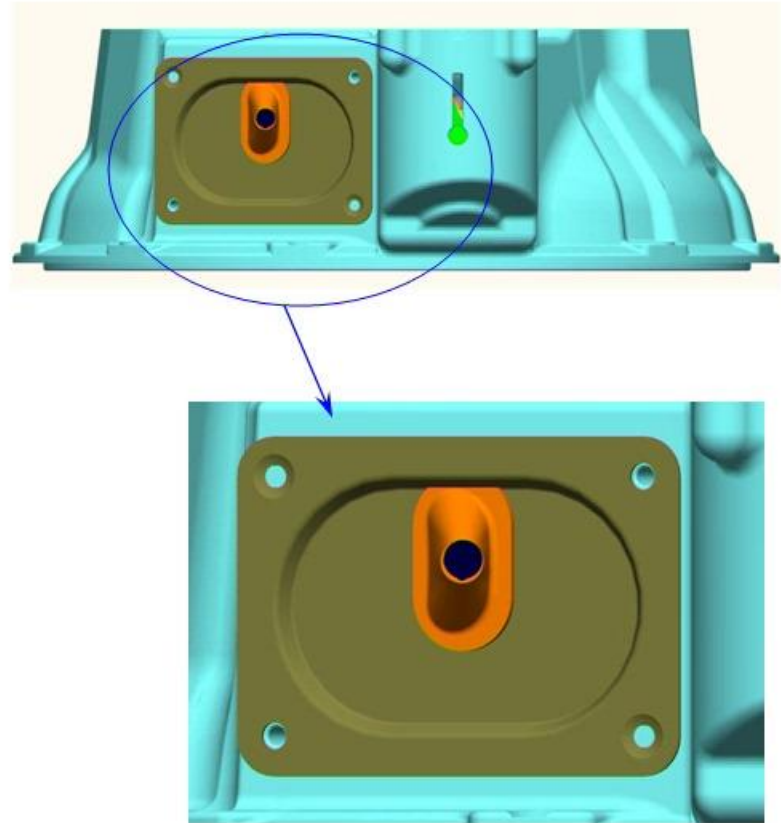
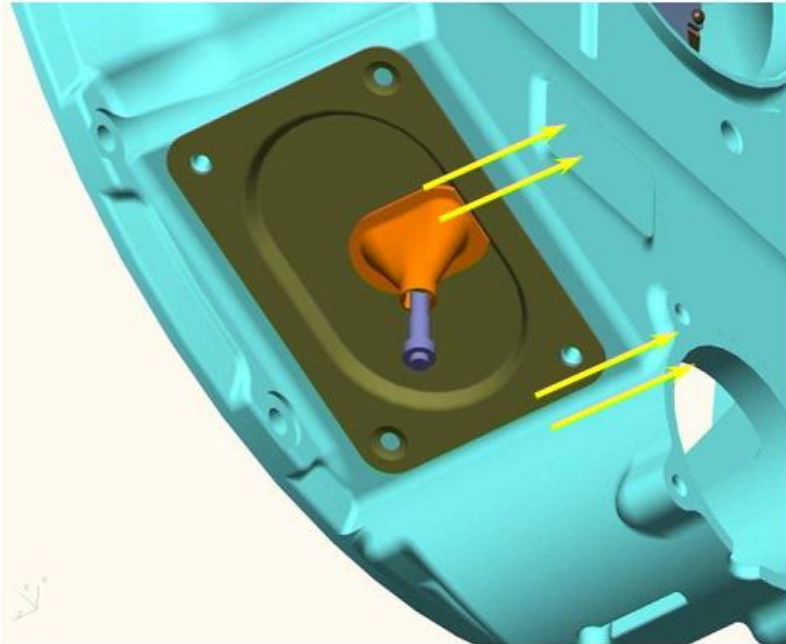
ITEM NUMBER D07-22462-000 DESCRIPTION GREASE TUBE ASSY - ADVANTAGE CLUTCH	DAIMLER		Daimler Trucks North America	
	THE INFORMATION CONTAINED HEREIN IS PROPRIETARY DATA, AND IS NOT FOR DISSEMINATION OR DISCLOSURE, IN WHOLE OR IN PART, FOR ANY PURPOSE OTHER THAN THAT FOR WHICH IT IS SUBMITTED, EXCEPT AS AUTHORIZED IN WRITING BY DAIMLER TRUCKS NORTH AMERICA LLC (DTNA)			
	MATERIAL APPROVAL	DATE	UNLESS OTHERWISE NOTED, DIMENSIONS AND TOLERANCES ARE DEFINED ACCORDING TO ASME Y14.5M- 1994, WITH EXCEPTION PER DTNA 09ENG-WI037	
	N/A	N/A		
	DRAWN BY	DATE		
	D.PALIGO	06/21/10		
	CHECKED BY	DATE		
	D.PALIGO	06/21/10		
	RESPONSIBLE ENGINEER	DATE	THIRD ANGLE PROJECTION	UNITS OF MEASURE MM
	APPROVED BY	DATE		
R.MARTIN	06/21/10			
INST-GREASE TUBE ASSY ADVANTAGE CLUTCH SUPPLEMENTAL DESCRIPTION				
181A1				
ITEM/DRAWING NUMBER	D07-22462		REVISION LETTER	A
			PAGE	1 of 4

Release Bearing with Assembled Grease Hose



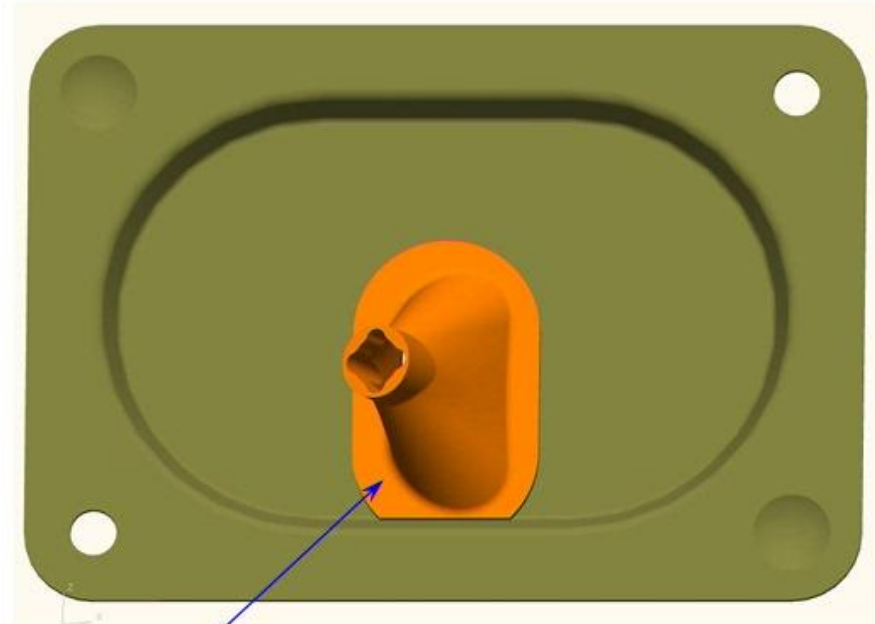
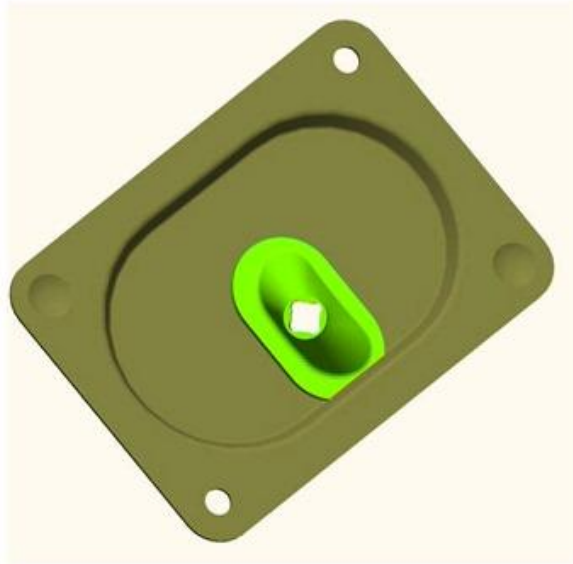
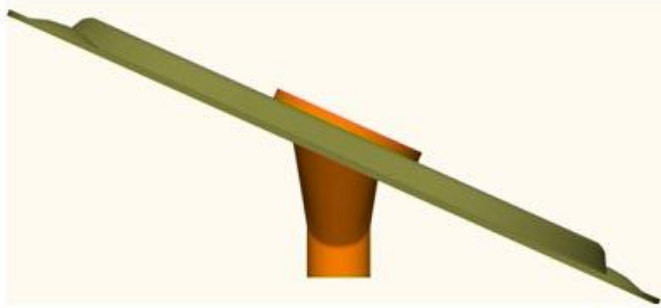
- Clutch Grease hose and 90 degree Elbow

Grommet Assembly



- Hand hole cover should be assembled with Grommet biased towards Transmission (Rear Axle)

Hand hole Cover with Grommet



Grommet

- **Slotted hand hole cover with grommet already assembled on transmission.**