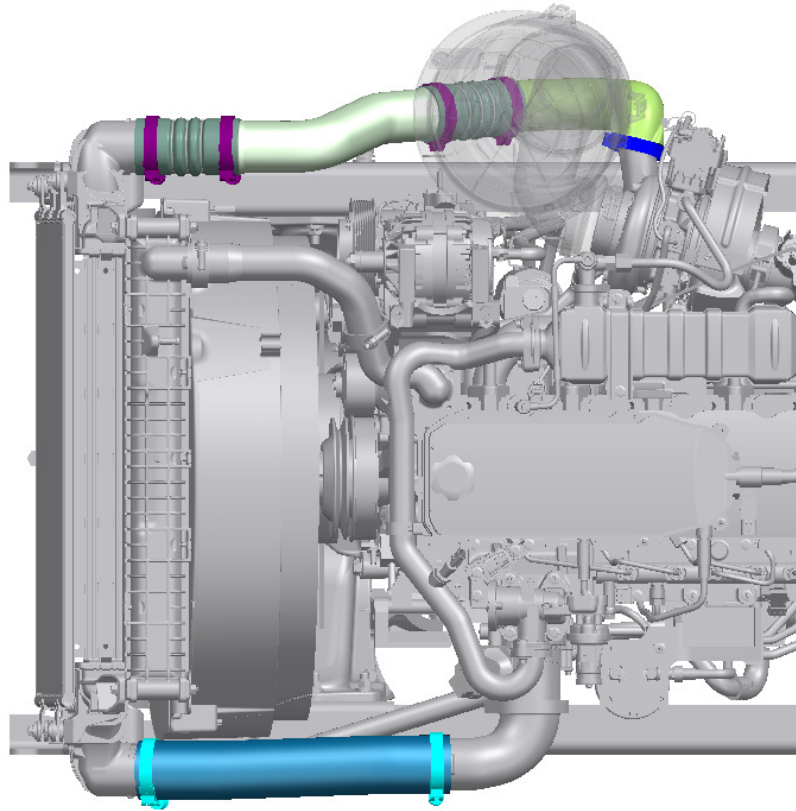
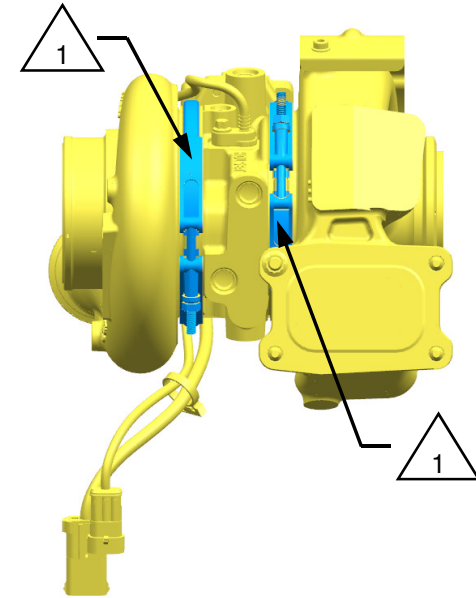


RELEASE NUMBER	REV LTR	REVISION DESCRIPTION	BY	DATE	APPD
P51394-39	-	INITIAL RELEASE	DM8	09/12/17	FWM



-000 SHOWN

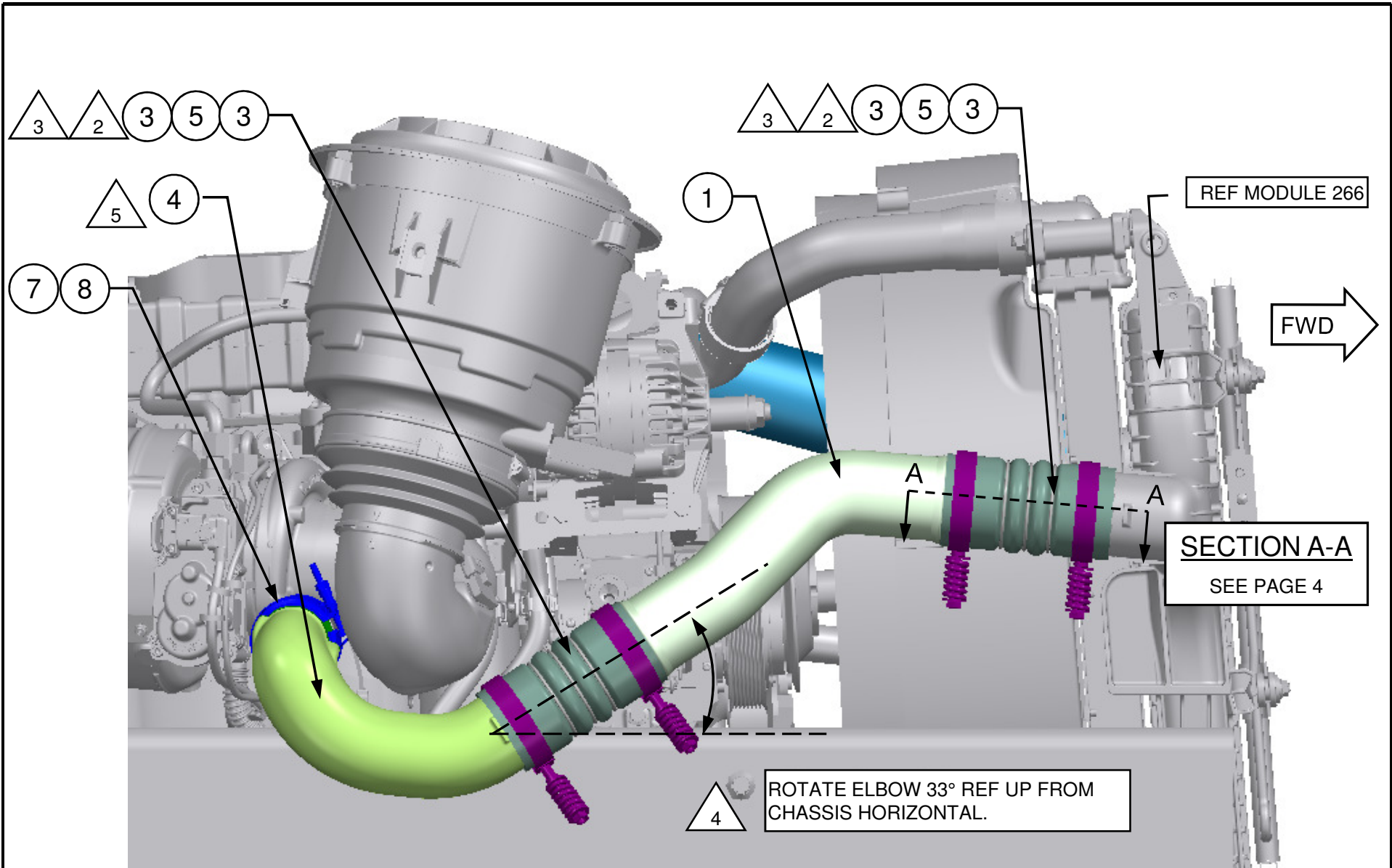
-001 SIMILAR



TURBO GENERIC SHOWN SEE PAGE 4 FOR ORIENTATION INFO

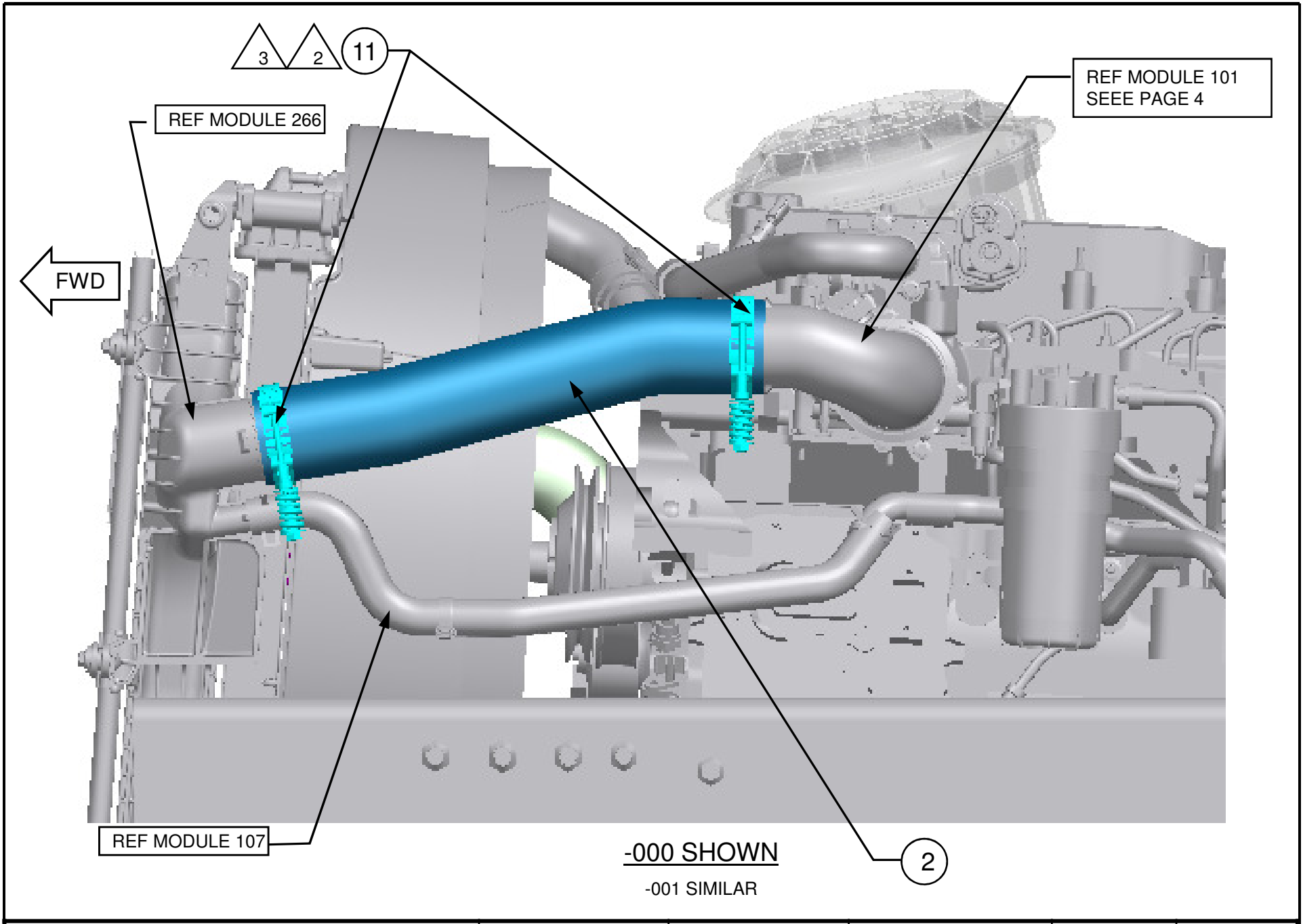
- 1 TORQUE V-BAND CLAMP ON TURBO COMPRESSOR BODY AND TURBO ELBOW CLAMP TO: 8.5±0.5 N-M (6.3 LB-FT).
- 2 ROTATE CLAMPS DOWN AS SHOWN, INBOARD AND DOWN IF NEEDED FOR HOOD CLEARANCE.
- 3 INSERTION DEPTH NOT TO EXCEED 1.65 IN TO MAINTAIN CLEARANCE TO STEEL RINGS.
- 4 ROTATE AS NECESSARY TO ALIGN WITH ITEM 1, CONVOLUTE NOT TO BE DEFORMED.
- 5 INSTALL O-RING ON ELBOW PRIOR TO ASSEMBLY.

ITEM NUMBER D01-34680-001	DESCRIPTION INSTL-CAC,M2 106,ISB,5DEG	ITEM NUMBER D01-34680-000	DESCRIPTION INSTL-CAC,M2 106,ISB,3DEG	DAIMLER		Daimler Trucks North America	
				THE INFORMATION CONTAINED HEREIN IS PROPRIETARY DATA, AND IS NOT FOR DISSEMINATION OR DISCLOSURE, IN WHOLE OR IN PART, FOR ANY PURPOSE OTHER THAN THAT FOR WHICH IT IS SUBMITTED, EXCEPT AS AUTHORIZED IN WRITING BY DAIMLER TRUCKS NORTH AMERICA LLC (DTNA).			
MATERIAL APPROVAL N/A		DATE N/A		DRAWN BY D.MUNIVE		DATE 09/12/17	
CHECKED BY V.GUTIERREZ		DATE 09/12/17		RESPONSIBLE ENGINEER T.CARVER		DATE 09/12/17	
APPROVED BY F.MENCHE		DATE 09/12/17		THIRD ANGLE PROJECTION		UNITS OF MEASURE MM	
SUPPLEMENTAL DESCRIPTION INSTL,CAC,M2 106,ISB,OBD16							
261A1							
ITEM/DRAWING NUMBER D01-34680				REVISION LETTER -		PAGE 1 of 4	



-000 SHOWN

-001 SIMILAR



THE INFORMATION CONTAINED HEREIN IS PROPRIETARY DATA, AND IS NOT FOR DISSEMINATION OR DISCLOSURE, IN WHOLE OR IN PART, FOR ANY PURPOSE OTHER THAN THAT FOR WHICH IT IS SUBMITTED, EXCEPT AS AUTHORIZED IN WRITING BY DAIMLER TRUCKS NORTH AMERICA LLC (DTNA)

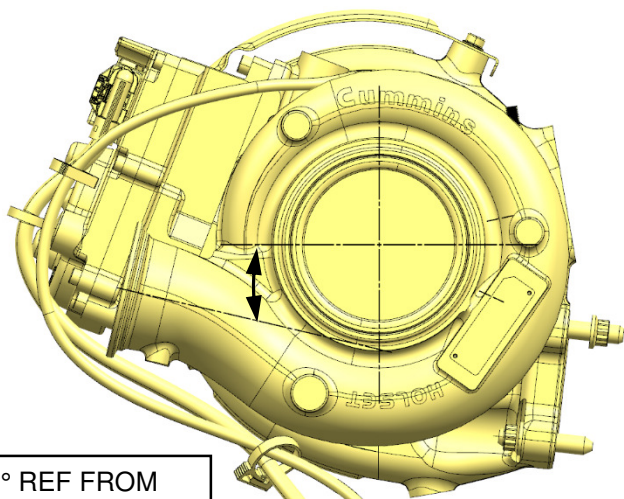
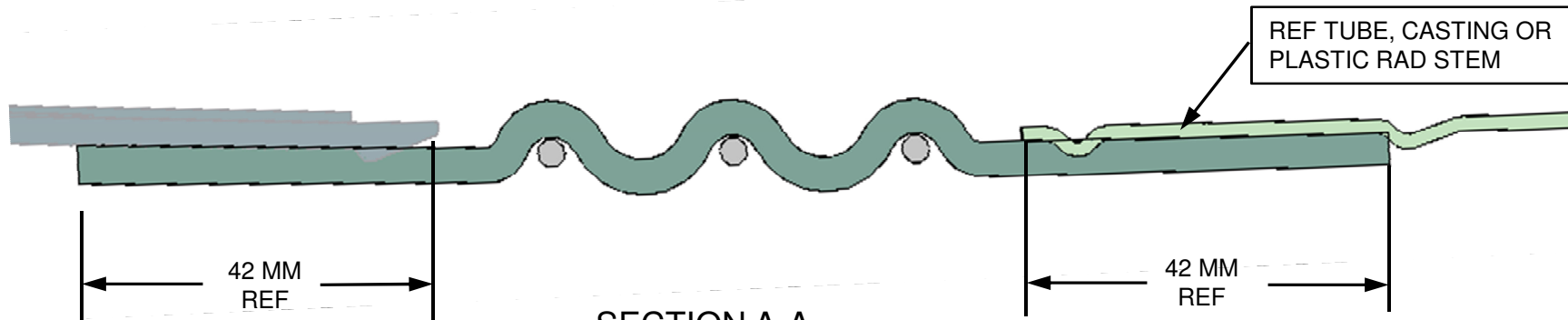
DAIMLER

Daimler Trucks
North America

ITEM/DRAWING NUMBER
D01-34680

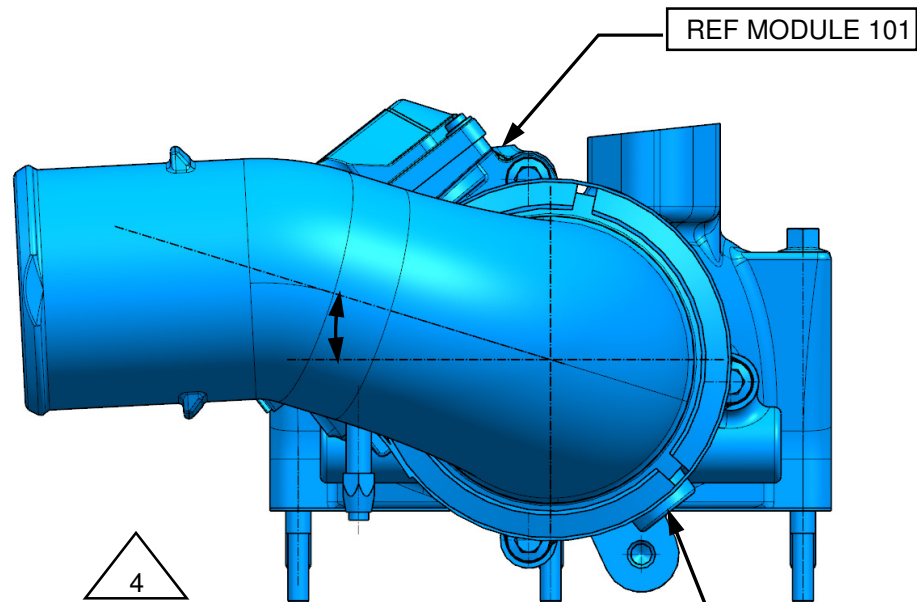
REVISION LETTER
-

PAGE
3 of 4



TURBO 13.2° REF FROM CHASSIS HORIZONTAL.

TURBO ORIENTATION FOR REFERENCE



ROTATE ELBOW 17° REF UP FROM ENGINE HORIZONTAL.

PLUG INSTALLED BY SUPPLIER

-000 SHOWN

-001 SIMILAR